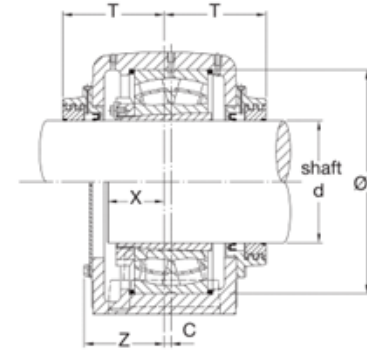


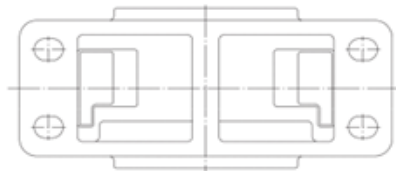
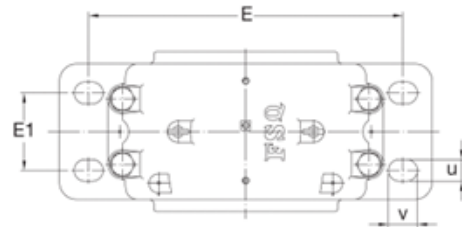
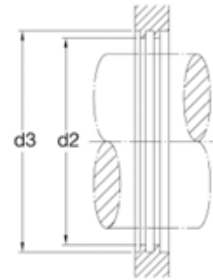
Labyrinth (TRIPLE) "TS" Seal  
Standard on SD Housings



TACONITE TYPE "TAC" SEAL

Plummer blocks of series SD 31 TS are used for large spherical roller bearings of Series 231xx CK with adapter sleeves. They are equipped with two labyrinth sealing collars having a push fit on the shaft. A rubber O-ring is fitted between the collar and shaft to ensure rotating together.

Special bosses are provided on the lower half of the housing to allow easy modification for oil lubrication. The bosses can be drilled and tapped to take an oil level gauge and drain plug. An oil circulating system can also be connected. The housings can carry very heavy loads and are designed for heavy duty applications. In severe condition, taconite seal is available to exclude fine abrasive dust and to retain lubricant.



HOUSING NO.	SHAFT DIA. d		DIMENSIONS mm																	BOLT DIA. S	SPHERICAL ROLLER BEARING	ADAPTER SLEEVE		WEIGHT kg	LOCATING RING		
	METRIC	INCH	D H7	d2 H12	d3 H12	A h13	B	F H13	E	b	G	H	L	C	E1	X	T	Z	U			V	METRIC		INCH	NUMBER	QTY.
SD 3134	150	6	280	187	197	170	510	108	430	180	70	335	230	14	100	76	154	120	28	35	M24	23134K	H3134	HE3134	61.5	280x10	2
SD 3136	160	6 1/2	300	195	205	180	530	116	450	190	75	355	240	15	110	81	159	130	30	38	M24	23136K	H3136	HE3136	72	300x10	2
SD 3138	170	6 3/4	320	217	230	190	560	124	480	210	80	375	260	10	120	86	168	140	35	48	M24	23138K	H3138	HE3138	84	320x10	2
SD 3140	180	7	340	222	237	210	610	132	510	230	85	410	280	10	130	91	178	150	35	42	M30	23140K	H3140	HE3140	113	340x10	2
SD 3144	200	8	370	246	265	220	640	140	540	240	90	435	290	12	140	96	184	155	36	46	M30	23144K	H3144		128	370x10	2
SD 3148	220	9	400	265	285	240	700	148	600	260	95	475	310	12	150	102	194	160	38	46	M30	23148K	H3148		166	400x10	2
SD 3152	240	9 1/2	440	285	305	260	770	164	650	280	100	515	330	13	160	112	200	170	45	60	M36	23152K	H3152		198	440x10	2
SD 3156	260	10	460	307	327	280	790	166	670	280	105	550	320	16	160	115	200	170	45	60	M36	23156K	H3156		232	460x10	2
SD 3160	280	11	500	325	345	300	830	180	710	310	110	590	350	22	190	124	213	190	45	64	M36	23160K	H3160		279	500x10	2
SD 3164	300		540	345	365	320	880	196	750	330	115	630	370	23	200	135	224	200	45	72	M36	23164K	H3164		328	540x10	2
SD 3168	320		580	368	390	340	965	210	840	380	120	670	390	25	240	155	248	220	52	70	M36	23168K	H3168		420	580x10	2
SD 3172	340		600	388	408	360	1040	212	890	390	130	720	400	22	255	159	254	225	60	77	M48	23172K	H3172		584	600x10	2
SD 3176	360		620	408	428	380	1120	214	980	400	135	750	405	22	255	162	256	240	68	88	M56	23176K	H3176		644	620x10	2
SD 3180	380		650	428	448	400	1245	220	1050	420	140	790	425	22	270	167	267	260	75	96	M64	23180K	H3180		740	650x10	2