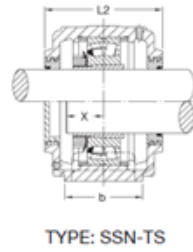
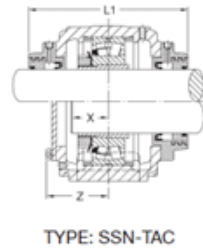
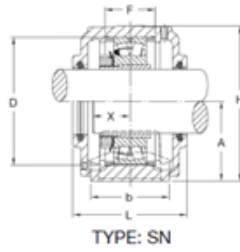
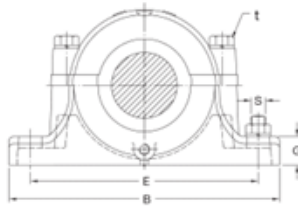


SN-SSN 600 Series

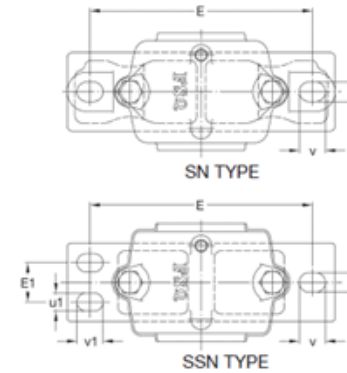
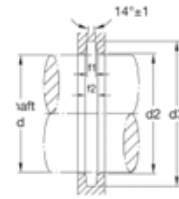
FSQ



HOUSING NO.	NOMINAL DIMENSIONS (mm)																
	SHAFT DIA. d		D H7	B	b	G	F H13	A h13	L	H	E	E1	L1	X	d2(H12) METRIC	d3 H12	L2
	METRIC	INCH															
SN 605	20	3/4	62	185	52	22	34	50	80	90	150	25	-	27	21.5	31	-
SN 606	25	1	72	185	52	22	37	50	82	95	150	25	-	27	26.5	38	-
SN 607	30	1 1/8	80	205	60	25	41	60	90	110	170	30	-	32	31.5	43	-
SN 608	35	1 1/4	90	205	60	25	43	60	95	115	170	30	-	34	36.5	48	-
SN SSN 609	40	1 1/2	100	255	70	28	46	70	105	130	210	35	-	36	41.5	53	110
SN SSN 610	45	1 3/4	110	255	70	30	50	70	115	135	210	35	-	39	46.5	58	120
SN SSN 611	50	2	120	275	80	30	53	80	120	150	230	40	185	40	51.5	67	125
SN SSN 612	55	2 1/8	130	280	80	30	56	80	125	155	230	40	185	44	56.5	72	130
SN SSN 613	60	2 1/4	140	315	90	32	58	95	130	175	260	50	200	46	62	77	135
SN SSN 614	60	2 1/4	150	320	90	32	61	95	130	185	260	50	200	46	62	77	135
SN SSN 615	65	2 1/2	160	345	100	35	65	100	140	195	290	50	210	51	67	82	145
SN SSN 616	70	2 3/4	170	345	100	35	68	112	145	212	290	50	210	52	72	89	150
SN SSN 617	75	3	180	380	110	40	70	112	155	218	320	60	220	56	77	94	160
SN SSN 618	80	3 1/4	190	400	110	33	74	112	160	230	320	60	225	58	82	99	165
SN SSN 619	85		200	420	120	36	77	125	170	245	350	70	235	60	87	104	180
SN SSN 620	90	3 1/2	215	420	120	38	83	140	175	280	350	70	240	64	92	111	180
SN SSN 622	100	4	240	460	130	40	90	150	190	300	390	70	258	69	102	125	195
SN SSN 624	110	4 1/4	260	540	160	50	96	160	205	325	450	90	280	73	113	135	210
SN SSN 626	115	4 1/2	280	560	160	50	103	170	215	350	470	90	300	77	118	140	220
SN SSN 628	125	5	300	630	170	55	112	180	235	375	520	90	320	83	128	154	240
SN SSN 630	135	5 1/4	320	680	180	55	118	190	245	395	560	90	340	88	138	164	250
SN SSN 632	140	5 1/2	340	710	190	60	124	200	255	415	580	100	350	93	143	173	260

FSQ

SN-SSN 600 Series



NOTES:

Foot of standard housing SSN type is solid without mounting holes or can be precast as 2-bolt (with prefix T) or 4-bolt mounting holes (with prefix F).

Taconite seal will be supplied as optional for perfect arrangement in severe operating conditions to prevent contamination from fine abrasive dust.

ZF rubber seals can be supplied upon request.

t	ft H13	f2	2-Bolt		4-Bolt		S		WEIGHT (kg)		BEARING NO.		ADAPTER SLEEVE		LOCATING RING		FELT SEAL
			u	v	u1	v1	2 Bolt	4 Bolt	SN6	SSN6	SELF-ALIG. BALL	SPHERICAL ROLLER	METRIC	INCH	NUMBER	QTY	
M8	3	4.2	16	20	14	20	M12	M10	2.11	-	1305K 2305K	-	H305 H2305	HE305 HE2305	62x8.5 62x10	2 1	FS605
M10	4	5.4	16	20	14	20	M12	M10	2.09	-	1306K 2306K	-	H306 H2306	HE306 HE2306	72x9 72x10	2 1	FS606
M10	4	5.4	16	20	14	20	M12	M10	3.4	4.1	1307K 2307K	-	H307 H2307	HE307 HE2307	80x10 80x10	2 1	FS607
M10	4	5.4	15	24	14	20	M12	M10	3.6	4.7	1308K 2308K	21308K	H308 H2308	HE308 HE2308	90x10 90x10	2 1	FS608
M12	4	5.4	19	25	16	23	M16	M12	5.3	6.8	1309K 2309K	21309K	H309 H2309	HE309 HE2309	100x10.5 100x10	2 1	FS609
M12	4	5.4	18	23	16	23	M16	M12	5.5	6.8	1310K 2310K	21310K	H310 H2310	HE310 HE2310	110x11.5 110x10	2 1	FS610
M12	5	6.9	20	28	16	23	M16	M12	6.9	9.0	1311K 2311K	21311K	H311 H2311	HE311 HE2311	120x12 120x10	2 1	FS611
M12	5	6.9	20	28	16	23	M16	M12	8.8	10.5	1312K 2312K	21312K	H312 H2312	HE312 HE2312	130x12.5 130x10	2 1	FS612
M16	5	6.8	22	30	16	23	M20	M12	9.8	12.4	1313K 2313K	21313K	H313 H2313	HE313 HE2313	140x12.5 140x10	2 1	FS613
M16	5	6.8	22	30	18	23	M20	M16	11.5	14.6	1314K 2314K	2314K	H314 H2314	HE314 HE2314	150x13 150x10	2 1	FS614
M16	5	6.8	23	28	20	30	M20	M16	13.0	16.4	1315K 2315K	21315K	H315 H2315	HE315 HE2315	160x14 160x10	2 1	FS615
M16	6	8.1	23	30	20	30	M20	M16	15.5	19.7	1316K 2316K	21316K	H316 H2316	HE316 HE2316	170x14.5 170x10	2 1	FS616
M20	6	8.1	26	35	20	30	M24	M16	16.3	20.7	1317K 2317K	21317K	H317 H2317	HE317 HE2317	180x14.5 180x10	2 1	FS617
M20	6	8.1	27	38	20	30	M24	M16	20.0	24	1318K 2318K	-	H318 H2318	HE318 HE2318	190x15.5 190x10	2 1	FS618
M20	6	8.1	28	36	20	30	M24	M16	28.0	29.7	1319K 2319K	-	H319 H2319	HE319 HE2319	200x16 200x10	2 1	FS619
M20	7	9.3	27	33	20	30	M24	M16	30.5	37.1	1320K 2320K	-	H320 H2320	HE320 HE2320	215x18 215x10	2 1	FS620
M20	8	10.0	28	32	20	30	M24	M16	42	49.2	1322K 2322K	-	H322 H2322	HE322 HE2322	240x20 240x10	2 1	FS622
M24	8	10.7	34	42	24	36	M30	M20	59	72	-	22324K	H2324	HE2324	260x10	1	FS624
M24	8	10.7	34	42	24	36	M30	M20	61.5	80.9	-	22326K	H2326	HE2326	280x10	1	FS626
M30	9	12.2	34	46	24	36	M30	M20	88	105	-	22328K	H2328	HE2328	300x10	1	FS628
M30	9	12.2	38	44	24	36	M30	M20	89	115	-	22330K	H2330	HE2330	320x10	1	FS630
M30	10	13.7	40	52	28	42	M36	M24	127	145	-	22332K	H2332	HE2332	340x10	1	FS632