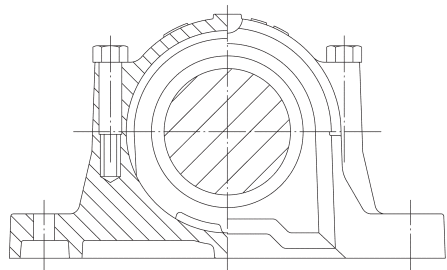
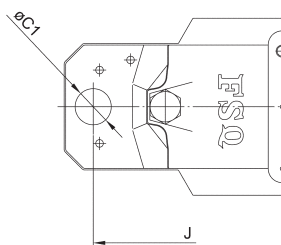


HOUSING NO.	SHAFT DIA.		DIMENSIONS mm														
	d	d1	L	b	f1 H13	F H13	D H7	d2 H12	d3 H12	H	A h12	G	E	B	v	u	S
SNK 205	25	30	67	46	5	25	52	36.5	44.5	72	40	19	130	165	20	13	10
SNK 206	30	35	77	52	5	32	62	46.5	54.5	87	50	22	150	185	22	13	10
SNK 207	35	45	82	52	5	34	72	56.5	64.5	92	50	22	150	185	20	13	10
SNK 208	40	50	85	60	5	39	80	62	70.5	106	60	25	170	205	20	15	12
SNK 209	45	55	85	60	5	30	85	67	75.5	108	60	25	170	205	20	15	12
SNK 210	50	60	90	60	5	41	90	72	80.5	112	60	25	170	205	20	15	12
SNK 211	55	65	95	70	5	44	100	77	85.5	126	70	28	210	255	23	18	16
SNK 212	60	70	105	70	5	48	110	87	95.5	132	70	30	210	255	23	18	16
SNK 213	65	75	110	80	5	51	120	92.5	101	147	80	30	230	275	24	18	16
SNK 215	75	85	115	80	5	56	130	102.5	111	153	80	30	230	280	26	18	16
SNK 216	80	90	120	90	5	58	140	108	116.5	174	95	32	260	315	29	22	20
SNK 217	85	95	125	90	5	61	150	112	120.5	180	95	32	60	320	30	22	20
SNK 218	90	100	140	100	5	65	160	120	128.5	190	100	35	290	345	27	22	20
SNK 219	95	110	145	100	6	68	170	131	141	208.5	112	35	290	345	27	22	20
SNK 220	100	115	160	110	6	70	180	137.5	147.5	214.5	112	40	320	380	32	26	24
SNK 222	110	125	175	120	6	80	200	147.5	157.5	238.5	125	45	350	410	32	26	24
SNK 224	120	135	185	120	6	86	215	157.5	167.5	271	140	45	350	410	32	26	24
SNK 226	130	145	190	130	6	90	230	167.5	177.5	290	150	50	380	445	35	28	24
SNK 228	140	155	205	150	6	98	250	177.5	187.5	302	150	50	420	500	42	35	30
SNK 230	150	165	220	160	6	106	270	192.5	202.5	323	160	60	450	530	42	35	30
SNK 232	160	175	235	160	6	114	290	202.5	212.5	344	170	60	470	550	42	35	30

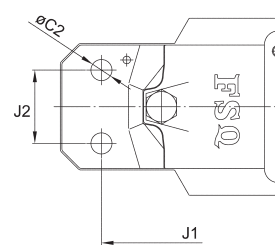
TYPE: SSNK



TYPE: 2-BOLT



TYPE: 4-BOLT



HOUSING NO.	BEARING NO.	TSNA=VW+V-RING			END COVER	Locating Ring		2-BOLT		4-BOLT		
		TSNA	VW	V-RING		Number	Q'ty	J	C1	J1	J2	C2
SNK 205	22205	TSNA-305	VW-305	V-30	506A	52x3.5	2	-	-	-	-	-
SNK 206	22206	TSNA-306	VW-306	V-35	507A	62x6	2	-	-	-	-	-
SNK 207	22207	TSNA-307	VW-307	V-45	509A	72x5.5	2	-	-	-	-	-
SNK 208	22208	TSNA-308	VW-308	V-50	510A	80x8	2	170	15	160	34	11
SNK 209	22209	TSNA-309	VW-309	V-55	511A	85x3.5	2	170	15	160	34	11
SNK 210	22210	TSNA-310	VW-310	V-60	512A	90x9	2	170	15	160	34	11
SNK 211	22211	TSNA-311	VW-311	V-65	513A	100x9.5	2	210	18	200	40	14
SNK 212	22212	TSNA-312	VW-312	V-70	515A	110x10	2	210	18	200	40	14
SNK 213	22213	TSNA-313	VW-313	V-75	516A	120x10	2	230	18	220	48	14
SNK 215	22215	TSNA-315	VW-315	V-85	518A	130x12.5	2	230	18	220	48	14
SNK 216	22216	TSNA-216	VW-216	V-90	216A	140x12.5	2	260	22	252	52	18
SNK 217	22217	TSNA-217	VW-217	V-95	217A	150x12.5	2	260	22	252	52	18
SNK 218	22218	TSNA-218	VW-218	V-100	218A	160x12.5	2	290	22	280	58	18
SNK 219	22219	TSNA-219	VW-219	V-110	519A	170x12.5	2	290	22	280	58	18
SNK 220	22220	TSNA-220	VW-220	V-120	520A	180x12	2	320	26	300	66	18
SNK 222	22222	TSNA-222	VW-222	V-130	522A	200x13.5	2	350	26	320	74	18
SNK 224	22224	TSNA-224	VW-224	V-140	524A	215x14	2	350	26	330	74	18
SNK 226	22226	TSNA-226	VW-226	V-150	526A	230x13	2	380	28	370	80	22
SNK 228	22228	TSNA-228	VW-228	V-160	528A	250x15	2	420	35	400	92	26
SNK 230	22230	TSNA-230	VW-230	V-170	530A	270x16.5	2	450	35	430	100	26
SNK 232	22232	TSNA-232	VW-232	V-180	532A	290x17	2	470	35	450	100	26

\* For TSSNK, oval holes is a standard and round holes is an option