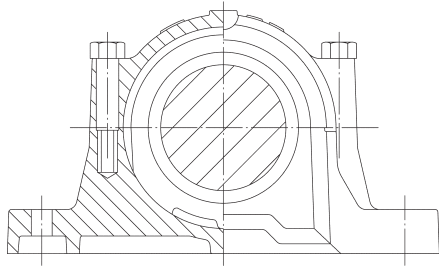
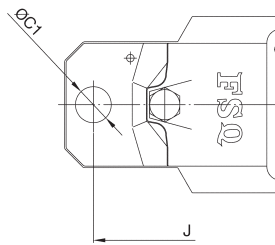


HOUSING NO.	SHAFT DIA.		DIMENSIONS mm														
	d	d1	L	b	f1 H13	F H13	D H7	d2 H12	d3 H12	H	A h12	G	E	B	v	u	S
SNK 305	25	30	77	52	5	32	62	36.5	44.5	87	50	22	150	185	22	13	10
SNK 306	30	35	82	52	5	34	72	46.5	54.5	92	50	22	150	185	20	13	10
SNK 307	35	45	85	60	5	39	80	56.5	64.5	106	60	25	170	205	20	15	12
SNK 308	40	50	90	60	5	41	90	62	70.5	112	60	25	170	205	20	15	12
SNK 309	45	55	95	70	5	44	100	67	75.5	126	70	28	210	255	23	18	16
SNK 310	50	60	105	70	5	48	110	72	80.5	132	70	30	210	255	23	18	16
SNK 311	55	65	110	80	5	51	120	77	85.5	147	80	30	230	275	24	18	16
SNK 312	60	70	115	80	5	56	130	87	95.5	153	80	30	230	280	26	18	16
SNK 313	65	75	120	90	5	58	140	92.5	101	174	95	32	260	315	29	22	20
SNK 314	70	80	125	90	5	61	150	97.5	106	180	95	32	260	320	30	22	20
SNK 315	75	85	140	100	5	65	160	102.5	111	190	100	35	290	345	27	22	20
SNK 316	80	90	145	100	6	68	170	131	141	208.5	112	35	290	345	27	22	20
SNK 317	85	95	160	110	6	70	180	137.5	147.5	214.5	112	40	320	380	32	26	24
SNK 319	95	110	175	120	6	80	200	147.5	157.5	238.5	125	45	350	410	32	26	24
SNK 320	100	115	185	120	6	86	215	215	157.5	271	140	45	350	410	32	26	24

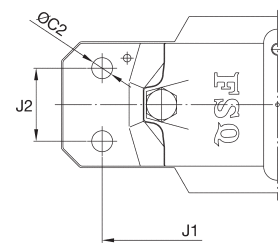
TYPE: SSNK



TYPE: 2-BOLT



TYPE: 4-BOLT



HOUSING NO.	BEARING NO.	TSNA=VW+V-RING			END COVER	Locating Ring		2-BOLT		4-BOLT		
		TSNA	VW	V-RING		Number	Q'ty	J	C1	J1	J2	C2
SNK 305	21305	TSNA-305	VW-305	V-30	506A	62x7.5	2	-	-	-	-	-
SNK 306	21306	TSNA-306	VW-306	V-35	507A	72x7.5	2	-	-	-	-	-
SNK 307	21307	TSNA-307	VW-307	V-45	509A	80x9	2	170	15	160	34	11
SNK 308	21308	TSNA-308	VW-308	V-50	510A	90x9	2	170	15	160	34	11
SNK 309	21309	TSNA-309	VW-309	V-55	511A	100x9.5	2	210	18	200	40	14
SNK 310	21310	TSNA-310	VW-310	V-60	512A	110x10.5	2	210	18	200	40	14
SNK 311	21311	TSNA-311	VW-311	V-65	513A	120x11	2	230	18	220	48	14
SNK 312	21312	TSNA-312	VW-312	V-70	515A	130x12.5	2	230	18	220	48	14
SNK 313	21313	TSNA-313	VW-313	V-75	516A	140x12.5	2	260	22	252	52	18
SNK 314	21314	TSNA-314	VW-314	V-80	517A	150x13	2	260	22	252	52	18
SNK 315	21315	TSNA-315	VW-315	V-85	518A	160x14	2	290	22	280	58	18
SNK 316	21316	TSNA-316	VW-316	V-90	519A	170x14.5	2	290	22	280	58	18
SNK 317	21317	TSNA-317	VW-317	V-95	520A	180x14.5	2	320	26	300	66	18
SNK 319	21319	TSNA-319	VW-319	V-110	522A	200x17.5	2	350	26	320	74	18
SNK 320	21320	TSNA-320	VW-320	V-120	524A	215x19.5	2	350	26	330	74	18

* For TSSNK, oval holes is a standard and round holes is an option