

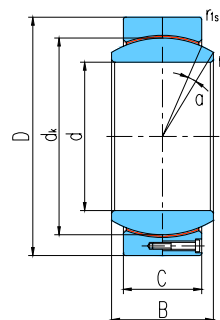


# 向心关节轴承 Radial Spherical Plain Bearings



滑动摩擦副：钢 / PTFE 编织物

Sliding contact surfaces: Steel / PTFE fabric



| 轴承型号<br>Bearing number | 外形尺寸<br>Dimensions |     |     |     |     |                       |                        |         | 额定载荷<br>Load ratings |               | 重量<br>Weight<br>≈kg |
|------------------------|--------------------|-----|-----|-----|-----|-----------------------|------------------------|---------|----------------------|---------------|---------------------|
|                        | d                  | D   | B   | C   | dk  | r <sub>s</sub><br>min | r <sub>1s</sub><br>min | α°<br>≈ | 动载荷<br>Dynamic       | 静载荷<br>Static |                     |
| GEC320HT               | 320                | 440 | 160 | 135 | 380 | 1.1                   | 3                      | 4       | 9230                 | 18460         | 78                  |
| GEC340HT               | 340                | 460 | 160 | 135 | 400 | 1.1                   | 3                      | 3       | 9720                 | 19440         | 83                  |
| GEC360HT               | 360                | 480 | 160 | 135 | 420 | 1.1                   | 3                      | 3       | 10200                | 20400         | 87                  |
| GEC380HT               | 380                | 520 | 190 | 160 | 450 | 1.5                   | 4                      | 4       | 12960                | 25920         | 129                 |
| GEC400HT               | 400                | 540 | 190 | 160 | 470 | 1.5                   | 4                      | 3       | 13530                | 27060         | 135                 |
| GEC420HT               | 420                | 560 | 190 | 160 | 490 | 1.5                   | 4                      | 3       | 14110                | 28220         | 141                 |
| GEC440HT               | 440                | 600 | 218 | 185 | 520 | 1.5                   | 4                      | 3       | 17310                | 34620         | 196                 |
| GEC460HT               | 460                | 620 | 218 | 185 | 540 | 1.5                   | 4                      | 3       | 17980                | 35960         | 204                 |
| GEC480HT               | 480                | 650 | 230 | 195 | 565 | 2                     | 5                      | 3       | 19830                | 39660         | 239                 |
| GEC500HT               | 500                | 670 | 230 | 195 | 585 | 2                     | 5                      | 3       | 20530                | 41060         | 248                 |
| GEC530HT               | 530                | 710 | 243 | 205 | 620 | 2                     | 5                      | 3       | 22870                | 45740         | 294                 |
| GEC560HT               | 560                | 750 | 258 | 215 | 655 | 2                     | 5                      | 4       | 25340                | 50680         | 345                 |
| GEC600HT               | 600                | 800 | 272 | 230 | 700 | 2                     | 5                      | 3       | 28980                | 57960         | 413                 |