

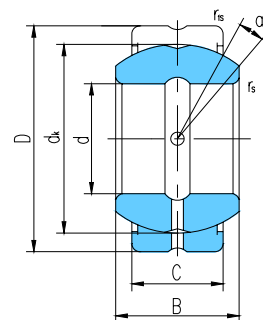
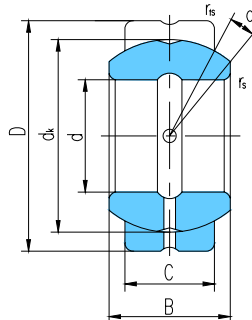


# 向心关节轴承 Radial Spherical Plain Bearings



滑动摩擦副: 钢 / 钢

Sliding contact surfaces: Steel / Steel



GEGZ...ES

GEGZ...ES-2RS

轴承型号 Bearing number		外形尺寸 Dimensions							额定载荷 Load ratings		重量 Weight ≈kg	
		d	D	B	C	dk	rs min	r1s min	α° ≈	动载荷 Dynamic		静载荷 Static
GEGZ31ES	GEGZ31ES-2RS	31.750	61.913	35.306	28.575	54.7	0.6	1	15	125	375	0.454
		1.25	2.4375	1.39	1.125	2.154	0.024	0.04				
GEGZ38ES	GEGZ38ES-2RS	38.100	71.438	40.132	33.325	63.9	0.6	1	14	170	510	0.726
		1.5	2.8125	1.58	1.312	2.516	0.024	0.04				
GEGZ44ES	GEGZ44ES-2RS	44.450	80.963	46.228	38.100	73	0.6	1	14	224	670	1.14
		1.75	3.1875	1.82	1.5	2.874	0.024	0.04				
GEGZ50ES	GEGZ50ES-2RS	50.800	90.488	52.578	42.850	82	0.6	1	14	280	850	1.68
		2	3.5625	2.07	1.687	3.228	0.024	0.04				
GEGZ57ES	GEGZ57ES-2RS	57.150	100.013	58.877	47.625	92	0.6	1	14	355	1060	2.01
		2.25	3.9375	2.318	1.875	3.622	0.024	0.04				
GEGZ63ES	GEGZ63ES-2RS	63.500	111.125	64.643	52.375	100	1	1	14	415	1250	2.95
		2.5	4.375	2.545	2.062	3.937	0.04	0.04				
GEGZ69ES	GEGZ69ES-2RS	69.850	120.650	70.866	57.150	109.5	1	1	14	500	1500	3.63
		2.75	4.75	2.79	2.25	4.311	0.04	0.04				
GEGZ76ES	GEGZ76ES-2RS	76.200	130.175	76.759	61.900	119	1	1	14	585	1760	4.36
		3	5.125	3.022	2.437	4.685	0.04	0.04				
GEGZ82ES	GEGZ82ES-2RS	82.550	139.700	82.931	66.675	128	1	1	14	680	2040	5.31
		3.25	5.5	3.265	2.625	5.039	0.04	0.04				
GEGZ88ES	GEGZ88ES-2RS	88.900	149.225	90.424	71.425	137	1	1	14	780	2360	6.81
		3.5	5.875	3.56	2.812	5.394	0.04	0.04				
GEGZ95ES	GEGZ95ES-2RS	95.250	158.750	94.945	76.200	146	1	1	14	900	2650	8.85
		3.75	6.25	3.738	3	5.748	0.04	0.04				
GEGZ101ES	GEGZ101ES-2RS	101.600	177.800	107.315	85.725	164.5	1	1	10	1120	3400	10.2
		4	7	4.225	3.375	6.476	0.04	0.04				
GEGZ114ES	GEGZ114ES-2RS	114.300	196.850	119.126	95.250	183	1	1	10	1400	4150	13.6
		4.5	7.75	4.69	3.75	7.205	0.04	0.04				
GEGZ139ES	GEGZ139ES-2RS	139.700	222.250	125.730	104.775	207	1	1	9	1730	5200	20.4
		5.5	8.75	4.95	4.125	8.15	0.04	0.04				