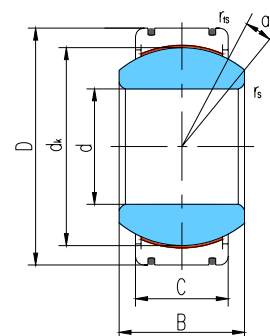
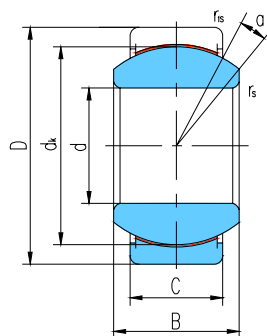




向心关节轴承 Radial Spherical Plain Bearings



滑动摩擦副：钢 / PTFE 编织物
Sliding contact surfaces: Steel / PTFE fabric



GEG...ET-2RS

GEG...XT-2RS

轴承 型号 Bearing number	外形尺寸 Dimensions								额定载荷 Load ratings		重量 Weight ≈kg
	mm								kN		
	d	D	B	C	dk	rs min	ris min	α° ≈	动载荷 Dynamic	静载荷 Static	
GEG15ET-2RS	15	30	16	10	25	0.3	0.3	16	32	75	0.048
GEG17ET-2RS	17	35	20	12	29	0.3	0.3	19	45	104	0.080
GEG20ET-2RS	20	42	25	16	35.5	0.3	0.6	17	85	204	0.152
GEG25ET-2RS	25	47	28	18	40.7	0.6	0.6	17	110	263	0.199
GEG30ET-2RS	30	55	32	20	47	0.6	1	17	140	338	0.296
GEG35ET-2RS	35	62	35	22	53	0.6	1	16	175	419	0.402
GEG40ET-2RS	40	68	40	25	60	0.6	1	17	225	540	0.535
GEG45ET-2RS	45	75	43	28	66	0.6	1	15	275	665	0.698
GEG50ET-2RS	50	90	56	36	80	0.6	1	17	430	1030	1.42
GEG60ET-2RS	60	105	63	40	92	1	1	17	550	1320	2.09
GEG70ET-2RS	70	120	70	45	105	1	1	16	705	1700	3.01
GEG80ET-2RS	80	130	75	50	115	1	1	14	860	2070	3.61
GEG90ET-2RS	90	150	85	55	130	1	1	15	1070	2570	5.50
GEG100ET-2RS	100	160	85	55	140	1	1	14	1150	2770	6.04
GEG110ET-2RS	110	180	100	70	160	1	1	12	1680	4030	9.74
GEG120XT-2RS	120	210	115	70	180	1	1	16	1890	4530	15.1
GEG140XT-2RS	140	230	130	80	200	1	1	16	2400	5760	18.9
GEG160XT-2RS	160	260	135	80	225	1.1	1.1	16	2700	6480	24.8
GEG180XT-2RS	180	290	155	100	250	1.1	1.1	14	3750	9000	35.9
GEG200XT-2RS	200	320	165	100	275	1.1	1.1	15	4120	9900	44.9
GEG220XT-2RS	220	340	175	100	300	1.1	1.1	16	4500	10800	50.9
GEG240XT-2RS	240	370	190	110	325	1.1	1.1	15	5360	12870	65.3
GEG260XT-2RS	260	400	205	120	350	1.1	1.1	15	6300	15120	82.0
GEG280XT-2RS	280	430	210	120	375	1.1	1.1	15	6750	16200	96.6