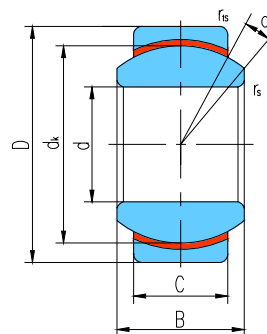
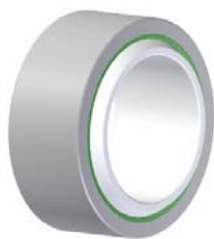




向心关节轴承 Radial Spherical Plain Bearings



滑动摩擦副：钢 / PTFE 塑料

Sliding contact surfaces: Stainless steel / PTFE plastic

轴承型号 Bearing number	外形尺寸 Dimensions mm								额定载荷 Load ratings kN		重量 Weight ≈ kg
	d	D	B	C	d _k	r _s min	r _{1s} min	α° ≈	动载荷 Dynamic	静载荷 Static	
GE10N	10	19	9	6	16	0.3	0.3	12	5.7	8.6	0.011
GE12N	12	22	10	7	18	0.3	0.3	10	7.5	11	0.017
GE15N	15	26	12	9	22	0.3	0.3	8	11	17	0.026
GE17N	17	30	14	10	25	0.3	0.3	10	15	22	0.040
GE20N	20	35	16	12	29	0.3	0.3	9	20	31	0.064
GE25N	25	42	20	16	35.5	0.6	0.6	7	34	51	0.115
GE30N	30	47	22	18	40.7	0.6	0.6	6	43	65	0.149
GE35N	35	55	25	20	47	0.6	1	6	56	84	0.228
GE40N	40	62	28	22	53	0.6	1	7	69	104	0.318
GE45N	45	68	32	25	60	0.6	1	7	90	135	0.421
GE50N	50	75	35	28	66	0.6	1	6	110	166	0.562
GE60N	60	90	44	36	80	1	1	6	172	259	1.03
GEG8N	8	19	11	6	16	0.3	0.3	21	5.7	8.6	0.014
GEG10N	10	22	12	7	18	0.3	0.3	18	7.5	11	0.021
GEG12N	12	26	15	9	22	0.3	0.3	18	11	17	0.033
GEG15N	15	30	16	10	25	0.3	0.3	16	15	22	0.049
GEG17N	17	35	20	12	29	0.3	0.3	19	20	31	0.083
GEG20N	20	42	25	16	35.5	0.3	0.6	17	34	51	0.153
GEG25N	25	47	28	18	40.7	0.6	0.6	17	43	65	0.203
GEG30N	30	55	32	20	47	0.6	1	17	56	84	0.304
GEG35N	35	62	35	22	53	0.6	1	16	69	104	0.408
GEG40N	40	68	40	25	60	0.6	1	17	90	135	0.542
GEG45N	45	75	43	28	66	0.6	1	15	110	166	0.713
GEG50N	50	90	56	36	80	0.6	1	17	172	259	1.14