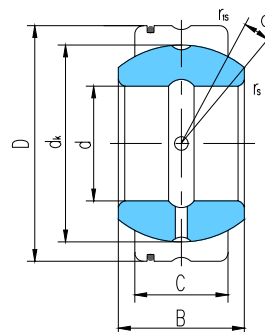




# 向心关节轴承 Radial Spherical Plain Bearings



滑动摩擦副：钢 / 钢  
Sliding contact surfaces: Steel / Steel



轴承 型号 Bearing number	外形尺寸 Dimensions mm								额定载荷 Load ratings kN		重量 Weight ≈kg
	d	D	B	C	dk	rs min	r1s min	α° ≈	动载荷 Dynamic	静载荷 Static	
GE12XS/K	12	22	11	9	18	0.5	0.5	7	13	68	0.019
GE15XS/K	15	26	13	11	22	0.5	0.5	6	20	102	0.031
GE20XS/K	20	32	16	14	28	0.5	0.5	4	33	166	0.054
GE22XS/K	22	37	19	16	32	0.5	0.5	6	43	217	0.088
GE25XS/K	25	42	21	18	36	0.5	0.5	5	55	275	0.128
GE30XS/K	30	50	27	23	45	1	1	6	87	439	0.232
GE35XS/K	35	55	30	26	50	1	1	5	110	552	0.291
GE40XS/K	40	62	33	28	55	1	1	6	130	654	0.392
GE45XS/K	45	72	36	31	62	1	1	5	163	816	0.609
GE50XS/K	50	80	42	36	72	1	1	5	220	1100	0.885
GE55XS/K	55	90	47	40	80	1	1	6	272	1360	1.29
GE60XS/K	60	100	53	45	90	1	1	6	344	1720	1.84
GE65XS/K	65	105	55	47	94	1	1	5	375	1870	2.03
GE70XS/K	70	110	58	50	100	1	1	5	425	2125	2.28
GE75XS/K	75	120	64	55	110	1	1	5	510	2570	3.08
GE80XS/K	80	130	70	60	120	1	1	5	610	3060	4.04
GE85XS/K	85	135	74	63	125	1	1	6	669	3340	4.44
GE90XS/K	90	140	76	65	130	1	1	5	718	3590	4.79
GE95XS/K	95	150	82	70	140	1	1	5	833	4165	6.07
GE100XS/K	100	160	88	75	150	1.5	1.5	5	956	4780	7.56
GE110XS/K	110	170	93	80	160	1.5	1.5	5	1080	5440	8.63
GE115XS/K	115	180	98	85	165	1.5	1.5	5	1190	5960	10.4
GE120XS/K	120	190	105	90	175	1.5	1.5	6	1330	6690	12.5
GE130XS/K	130	200	110	95	185	1.5	1.5	5	1490	7460	14.0
GE150XS/K	150	220	120	105	205	1.5	1.5	5	1820	9140	17.2