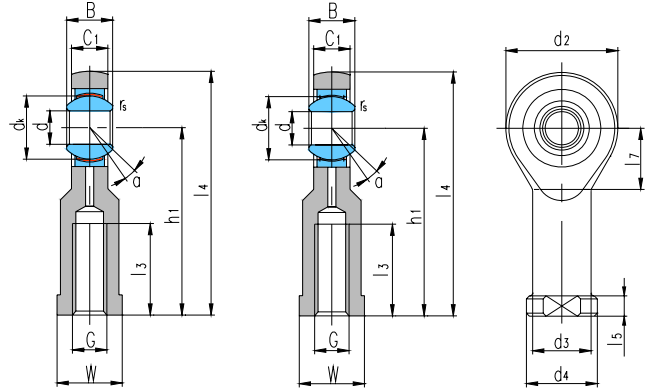




杆端关节轴承 Rod ends



滑动摩擦副: 钢 / PTFE 复合材料($d \leq 30$)
钢 / PTFE 编织物 ($d \geq 15$)

SI...C

SI...ET-2RS、

Sliding contact surfaces: Steel / PTFE composite material($d \leq 30$)
Steel / PTFE fabric($d \geq 15$)

轴承 型号 Bearing number	外形尺寸 Dimensions																额定载荷 Load Ratings kN		重量 Weight ≈kg
	d	B	d _k	C ₁ max	d ₂	G 6H	h ₁	l ₃ min	l ₄	l ₅	l ₇	W	d ₃	d ₄	r _s min	α° ≈	动载荷 Dynamic	静载荷 Static	
SI5C	5	6	10	4.5	21	M5	30	11	40.5	5	11.5	10	10	13	0.3	13	3.6	8.1	0.021
SI6C	6	6	10	4.5	21	M6	30	11	40.5	5	11.5	11	11	13	0.3	13	3.6	8.1	0.021
SI8C	8	8	13	6.5	24	M8	36	15	48	5	13	13	13	16	0.3	15	5.8	12.9	0.039
SI10C	10	9	16	7.5	29	M10	43	20	57.5	6.5	15	16	16	19	0.3	12	8.6	17.6	0.065
SI12C	12	10	18	8.5	34	M12	50	23	67	7	18	18	19	22	0.3	10	11	24.5	0.096
SI15C	15	12	22	10.5	40	M14	61	30	81	8	21	21	21	26	0.3	8	18	36	0.16
SI15ET-2RS																	25		
SI17C	17	14	25	11.5	46	M16	67	34	90	10	24	27	25	29	0.3	10	22	45	0.24
SI17ET-2RS																	32		
SI20C	20	16	29	13.5	53	M20×1.5	77	40	103.5	10	25.5	30	28	34	0.3	9	31	60	0.35
SI20ET-2RS																	45		
SI25C	25	20	35.5	18	64	M24×2	94	48	126	12	33	36	35	42	0.6	7	51	83	0.66
SI25ET-2RS																	85		
SI30C	30	22	40.7	20	73	M30×2	110	56	146.5	15	37.5	46	42	50	0.6	6	65	110	0.98
SI30ET-2RS																	110		
SI35ET-2RS	35	25	47	22	82	M36×3	125	60	166	15	40	55	48	58	0.6	6	140	146	1.5
SI40ET-2RS	40	28	53	24	92	M39×3	142	65	188	18	47	60	52	65	0.6	7	175	180	2.1
SI45ET-2RS	45	32	60	28	102	M42×3	145	65	196	20	52	65	58	70	0.6	7	225	240	2.7
SI50ET-2RS	50	35	66	31	112	M45×3	160	68	216	20	57	70	62	75	0.6	6	275	290	3.5
SI60ET-2RS	60	44	80	39	135	M52×3	175	70	242.5	20	68.5	80	70	88	1	6	430	450	5.6
SI70ET-2RS	70	49	92	43	160	M56×4	200	80	280	20	81	85	80	98	1	6	550	610	8.3
SI80ET-2RS	80	55	105	48	180	M64×4	230	85	320	25	91	95	95	110	1	6	705	750	13

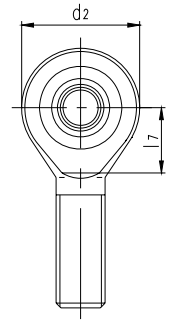
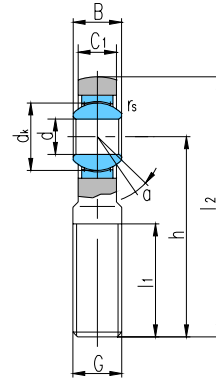
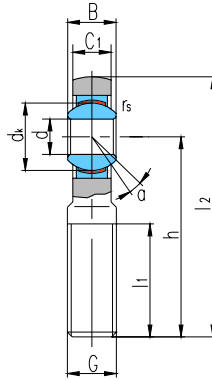
可提供不同螺距或螺纹精度有特殊要求的杆端关节轴承。Can supply other rod ends with different pitch or accuracy of thread.

若是左旋螺纹, 轴承型号和螺纹标记需加“L”和“左”, 例如: SI120C M20×1.5 左-6H。

For left-hand thread, suffix “L” is added to bearings number and thread sign, e.g. SI120C M20×1.5L-6H.



杆端关节轴承 Rod ends



滑动摩擦副: 钢 / PTFE 复合材料($d \leq 30$)
钢 / PTFE 编织物 ($d \geq 15$)

SA...C

SA...ET-2RS

Sliding contact surfaces: Steel / PTFE composite material($d \leq 30$)
Steel / PTFE fabric($d \geq 15$)

轴承 型号 Bearing number	外形尺寸 Dimensions											额定载荷 Load ratings		重量 Weight ≈kg	
	d	B	dk	C ₁ max	d ₂	G 6g	h	l ₁ min	l ₂	l ₇	r _s min	α° ≈	动载荷 Dynamic		静载荷 Static
SA5C	5	6	10	4.5	21	M5	36	16	46.5	11.5	0.3	13	3.6	3.9	0.017
SA6C	6	6	10	4.5	21	M6	36	16	46.5	11.5	0.3	13	3.6	5.5	0.017
SA8C	8	8	13	6.5	24	M8	42	21	54	13	0.3	15	5.8	10	0.029
SA10C	10	9	16	7.5	29	M10	48	26	62.5	15.5	0.3	12	8.6	16	0.050
SA12C	12	10	18	8.5	34	M12	54	28	71	18	0.3	10	11	23	0.066
SA15C	15	12	22	10.5	40	M14	63	34	83	21	0.3	8	18	32	0.12
SA15ET-2RS													25		
SA17C	17	14	25	11.5	46	M16	69	36	92	24	0.3	10	22	44	0.19
SA17ET-2RS													32		
SA20C	20	16	29	13.5	53	M20×1.5	78	43	104.5	25.5	0.3	9	31	60	0.31
SA20ET-2RS													45		
SA25C	25	20	35.5	18	64	M24×2	94	53	126	31	0.6	7	51	83	0.56
SA25ET-2RS													85		
SA30C	30	22	40.7	20	73	M30×2	110	65	146.5	35.5	0.6	6	65	110	0.89
SA30ET-2RS													110		
SA35ET-2RS	35	25	47	22	82	M36×3	140	82	181	41	0.6	6	140	146	1.4
SA40ET-2RS	40	28	53	24	92	M39×3	150	86	196	47	0.6	7	175	180	1.8
SA45ET-2RS	45	32	60	28	102	M42×3	163	92	214	52	0.6	7	225	240	2.5
SA50ET-2RS	50	35	66	31	112	M45×3	185	104	241	60	0.6	6	275	290	3.6
SA60ET-2RS	60	44	80	39	135	M52×3	210	115	277.5	75.5	1.0	6	430	450	5.7
SA70ET-2RS	70	49	92	43	160	M56×4	235	125	315	95	1.0	6	550	610	7.9
SA80ET-2RS	80	55	105	48	180	M64×4	270	140	360	105.5	1.0	6	705	750	12

可提供不同螺距或螺纹精度有特殊要求的杆端关节轴承。Can supply other rod ends with different pitch or accuracy of thread.

若是左旋螺纹, 轴承型号和螺纹标记需加“L”和“左”, 例如: SAL20C M20×1.5 左-6g。

For left-hand thread, suffix “L” is added to bearings number and thread sign, e.g. SAL20C M20×1.5L-6g.