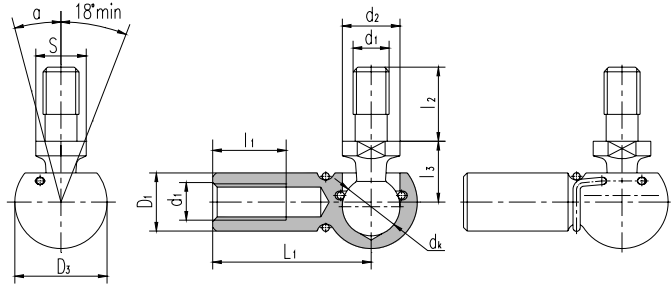
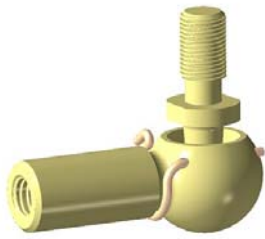




# 球头杆端关节轴承 Ball Joint Rod ends



滑动摩擦副：钢 / 钢

Sliding contact surfaces: Steel / Steel

轴承 型号 Bearing number	外形尺寸 Dimensions											额定静载荷 Static load ratings kN	重量 Weight ≈kg
	$d_1$	$d_2$	$d_k$	$l_1$	$l_2$	$l_3$	$S$	$L_1$	$D_1$	$D_3$	$\alpha^\circ$ ≈		
SQG5	M5	8	8	10.2	10.2	9	7	22	8	12.8	10	2.2	0.015
SQG6	M6	10	10	11.5	12.5	11	8	25	10	14.8	15	3.5	0.025
SQG8	M8	14	13	14	16.5	13	11	30	13	19.3	15	6.6	0.053
SQG10	M10	16	16	15.5	20	16	13	35	16	24	15	10	0.104
SQG12	M12	16	16	15.5	20	16	13	35	16	24	15	16	0.104
SQG14	M14×1.5	19	19	21.5	28	20	16	45	22	30	15	19	0.221
SQG14/B5	M14×2	19	19	21.5	28	20	16	45	22	30	15	26	0.221

球头座杆螺纹也可为左旋，若是左旋，轴承型号和螺纹标记需加“L”和“左”，例如：SQGL5 M5左-6H。  
The shank of ball joint housing may be left-hand thread, for left-hand thread, suffix “L” is added to bearing number and thread sign, e.g. SQGL5 M5L-6H.