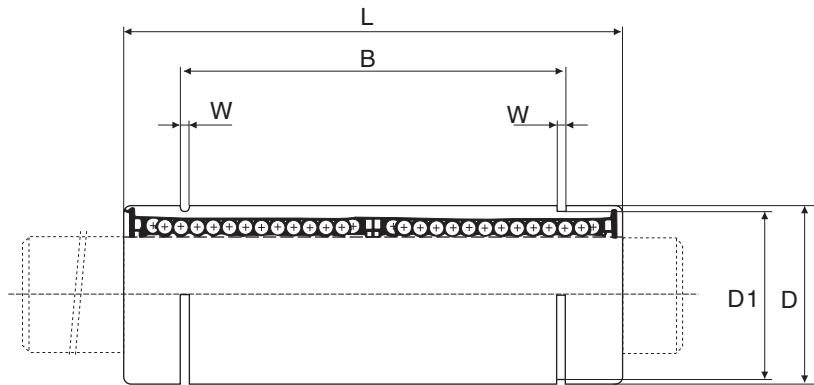
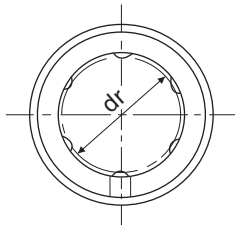


>> Linear bearing series

LME...LUU



LME□L series		Inside Diameter		Dimension (mm)						Weight (g)	Basic Load			
Type	Ball Rows	dr (mm)	Tolerance (μm)	Outer Diameter (D) dr (mm)	Tolerance (μm)	Length (L) dr (mm)	Tolerance (μm)	B dr (mm)	Tolerance (μm)		W	D1	Dynamic C(N)	Static Co(N)
LME 8LUU	4	8	+9 -1	16	0 -9	45	-0.3	33	-0.3	1.1	15.2	31	430	780
LME 12LUU	4	12		22		57		45.8		1.3	21	80	650	1200
LME 16LUU	5	16	26	70	49.8	1.3		24.9		145	1230	2350		
LME 20LUU	5	20	+11 -1	32	0 -13	80	-0.4	61	-0.4	1.6	30.3	180	1400	2750
LME 25LUU	6	25		40		112		82		1.85	38	440	1560	3140
LME 30LUU	6	30	47	123	104.2	1.85		44.5		580	2490	5490		
LME 40LUU	6	40	62	154	121.2	2.15		59		1170	3430	8040		
LME 50LUU	6	50	+16 -4	75	0 -15	192	-0.4	155.2	-0.4	2.65	72	3100	6080	15900
LME 60LUU	6	60		90		211		170		3.15	86.5	3500	7650	20000

