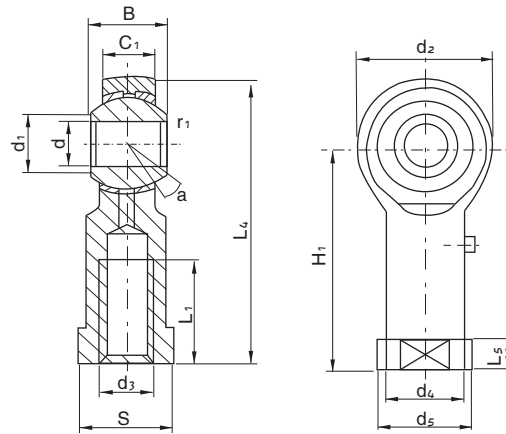


>> Inlaid liner rod ends with female thread (inch dimension) series

PHSB



Bearings number	Dimensions (mm)															a°	Spherical diameter (mm)	Ratings static load
	d	Threads (Ks)	d ₂	C ₁	B	d ₁	L ₄	L ₅	H ₁	L ₂	S	d ₅	d ₄	r ₁				
PHSB3	3/16	3/16×32	0.6692	0.2362	0.3150	0.3031	1.378	0.1575	1.0433	0.5512	0.3543	0.4331	0.3543	0.0197	13	0.4375 11.1125	350	
			17	6	8	7.7	35	4	26.5	14	9	11	9	0.5				
PHSB4	1/4	1/4×28	0.7283	0.2657	0.3543	0.3543	1.5433	0.1969	1.1811	0.5512	0.4331	0.5118	0.3937	0.0197	13	0.5000 12.70	500	
			18.5	6.75	9	9	39.2	5	30	14	11	13	10	0.5				
PHSB5	5/16	5/16×24	0.9055	0.3543	0.4724	0.4094	1.9291	0.2362	1.4763	0.6693	0.5512	0.6299	0.4921	0.0197	13	0.6250 15.875	700	
			23	9	12	10.4	49	6	37.5	17	14	16	12.5	0.5				
PHSB6	3/8	3/8×24	1.0629	0.4133	0.5512	0.5078	2.3031	0.3149	1.7716	0.8268	0.6693	0.7480	0.5906	0.0197	13	0.7500 19.05	1100	
			27	10.5	14	12.9	58.5	8	45	21	17	19	15	0.5				
PHSB8	1/2	1/2×20	1.2204	0.4724	0.6299	0.6220	2.6377	0.2953	2.0275	0.9449	0.7480	0.8661	0.1898	0.0197	13	0.8858 22.525	1700	
			31	12	16	15.8	67	7.5	51.5	24	19	22	17.5	0.5				
PHSB10	5/8	5/8×18	1.4960	0.5906	0.8268	0.7598	3.3267	0.3740	2.5787	1.2992	0.9448	1.0630	0.8661	0.0197	15	1.1220 28.5	2550	
			38	15	21	19.3	84.5	9.5	65.5	33	24	27	22	0.5				
PHSB12	3/4	3/4×16	1.8110	0.7086	0.9843	0.9409	3.9763	0.4330	3.0708	1.5748	1.1811	1.3385	1.0826	0.0197	15	1.3582 34.5	3500	
			46	18	25	23.8	101	11	78	40	30	34	27.5	0.5				
PHSB14	7/8	7/8×14	2.0472	0.7847	1.1024	1.0157	4.3307	0.4724	3.3070	1.6929	1.2598	1.4566	1.1811	0.0197	15	1.5000 38.10	4200	
			52	20	28	25.8	110	12	84	43	32	37	30	0.5				
PHSB16	1"	1"×12	2.3622	0.8661	1.2204	1.1732	4.8818	0.4724	3.7007	1.9685	1.4173	1.6535	1.3188	0.0197	15	1.6929 43	5500	
			60	22	31	29.6	124	12	94	50	36	42	33.5	0.5				

1. For Left-hand thread mark "L" is added to bearings number and thread, e.g. PHSB6L M3/8 × 24gL
2. The surface of spherical plain with a bronze line
3. To plate zine on the surface of rod body, the housing with a lubrication hole or a grease nipple