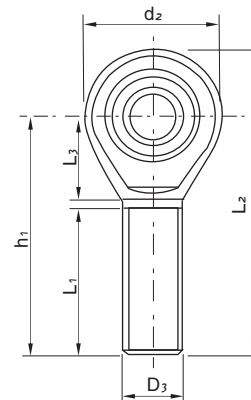
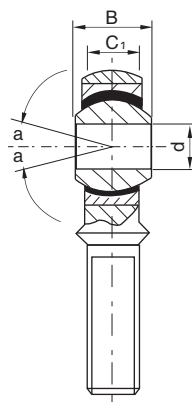


>> Self-lubricating rod end bearings male thread steel on plastic maintenance free series

SAB...F/K



Bearings number	Dimensions (mm)									a°	Max stat load capacity	Weight (kg)
	M	d ₁	d ₂	b ₁	b ₂	l ₁	l ₂	l ₃	l ₄			
SAB6F/K	M6 × 1	6	20	6	4	36	22	11	46	8	10.00	0.014
SAB8F/K	M8 × 1.25	8	23	8	5	42	25	12	53.5	8	16.00	0.027
SAB10F/K	M10 × 1.5	10	28	9	6	48	29	13	62	8	23.60	0.046
SAB12F/K	M12 × 1.75	12	32	10	7	54	33	15	70	8	31.00	0.073
SAB15F/K	M14 × 2	15	38	12	9	60	36	18	79	8	49.00	0.118
SAB17F/K	M16 × 2	17	44	14	10	66	40	20	88	8	61.00	0.180
SAB20F/K	M20 × 1.5	20	51	16	12	78	47	23	103.5	8	86.50	0.29
SAB25F/K	M24 × 2	25	62	20	16	94	57	30	125	8	140.00	0.56
SAB30F/K	M30 × 2	30	70	22	18	110	66	32	145	8	183.00	0.89
SAB35F/K	M36 × 3	35	82	25	20	130	82	38	171	8	236.00	1.34

1. For Left-hand thread mark "L" is added to bearings number and thread, e.g. SAB L8F/K M8 × 1.25L-6g
2. T= TO line SF1 material on the surface of spherical plain